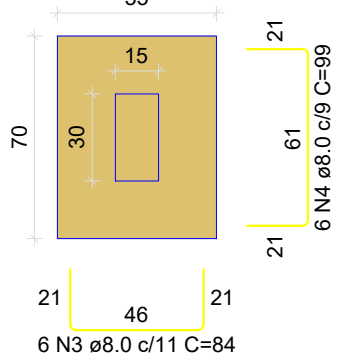


S1=S3=S4=S14=S16

PLANTA

ESC 1:25

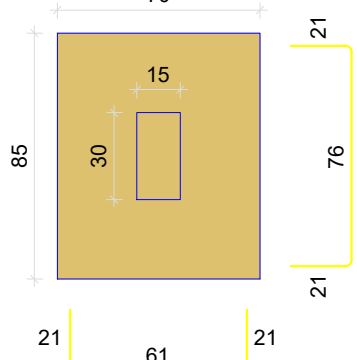


Solo com capacidade de suporte > 1.50 kgf/cm<sup>2</sup>  
Solo compactado sobre a sapata  
peso específico > 1600.00 kgf/m<sup>3</sup>

S2=S7=S9=S13=S15

PLANTA

ESC 1:25

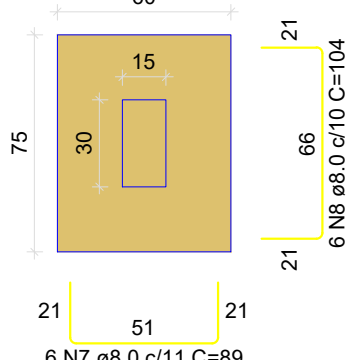


Solo com capacidade de suporte > 1.50 kgf/cm<sup>2</sup>  
Solo compactado sobre a sapata  
peso específico > 1600.00 kgf/m<sup>3</sup>

S5=S10

PLANTA

ESC 1:25

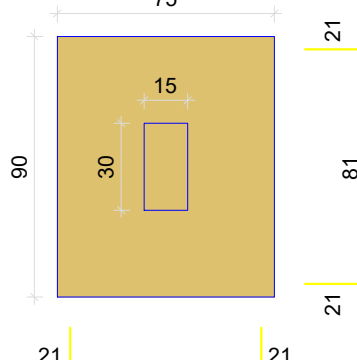


Solo com capacidade de suporte > 1.50 kgf/cm<sup>2</sup>  
Solo compactado sobre a sapata  
peso específico > 1600.00 kgf/m<sup>3</sup>

S11

PLANTA

ESC 1:25

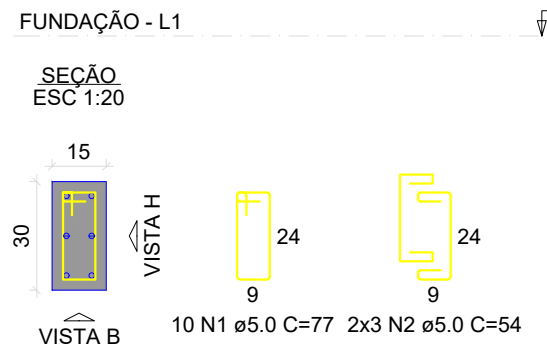
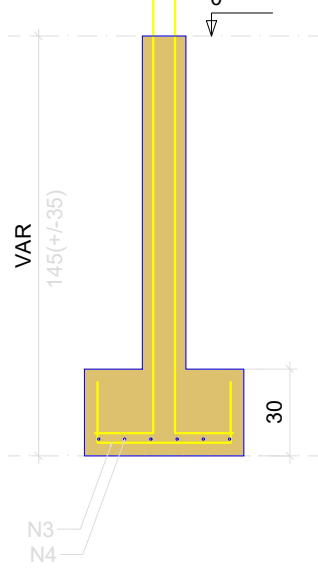


Solo com capacidade de suporte > 1.50 kgf/cm<sup>2</sup>  
Solo compactado sobre a sapata  
peso específico > 1600.00 kgf/m<sup>3</sup>

P1

CORTE

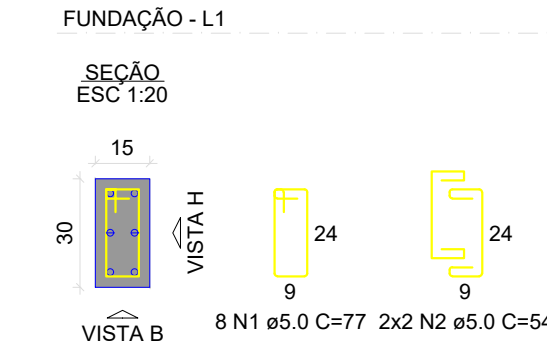
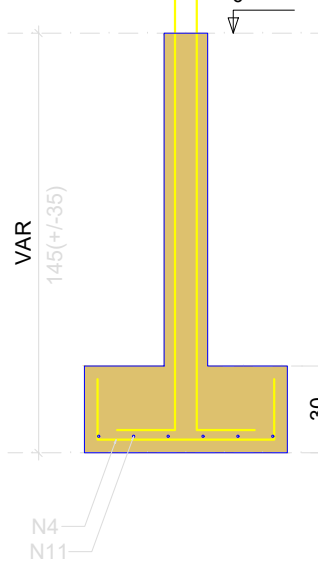
ESC 1:25



P13

CORTE

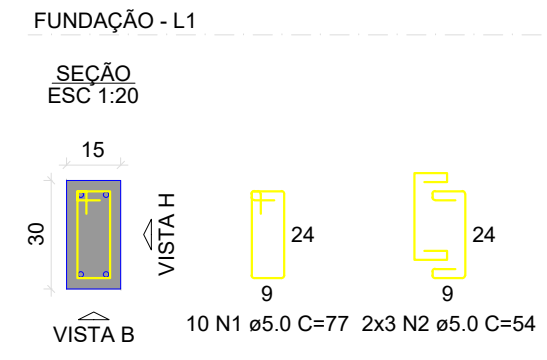
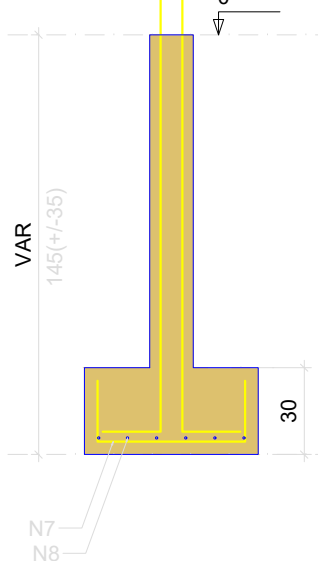
ESC 1:25



P5=P10

CORTE

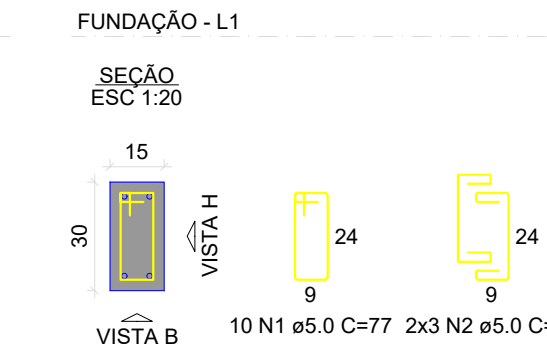
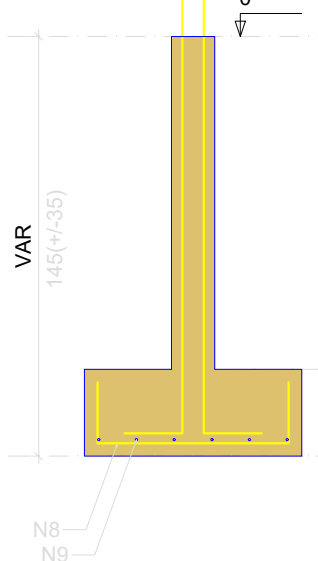
ESC 1:25



P11

CORTE

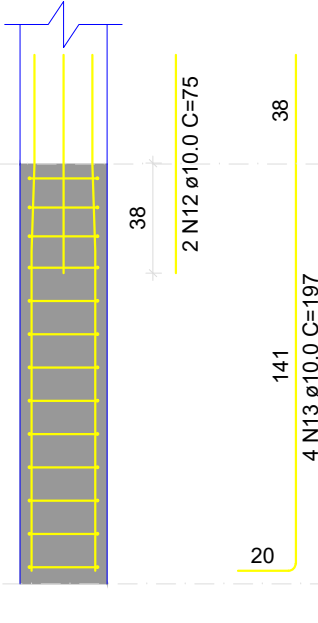
ESC 1:25



P14

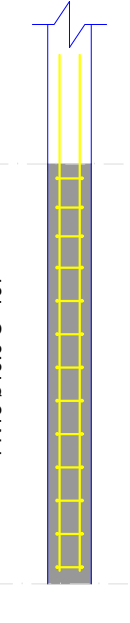
VISTA H

ESC 1:25



VISTA B

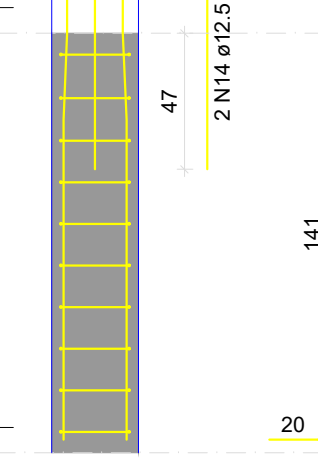
ESC 1:25



P15

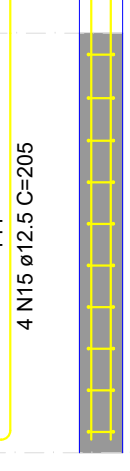
VISTA H

ESC 1:25



VISTA B

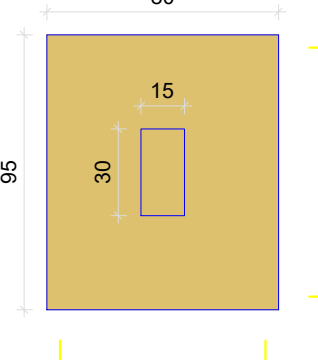
ESC 1:25



S6=S8

PLANTA

ESC 1:25

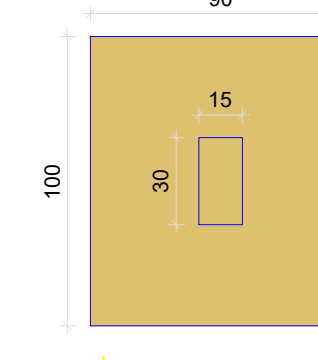


Solo com capacidade de suporte > 1.50 kgf/cm<sup>2</sup>  
Solo compactado sobre a sapata  
peso específico > 1600.00 kgf/m<sup>3</sup>

S12

PLANTA

ESC 1:25

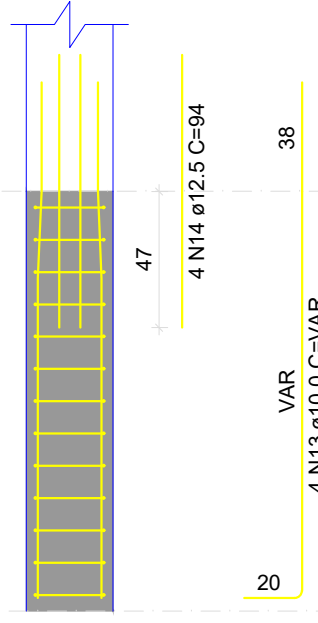


Solo com capacidade de suporte > 1.50 kgf/cm<sup>2</sup>  
Solo compactado sobre a sapata  
peso específico > 1600.00 kgf/m<sup>3</sup>

P3=P4=P16

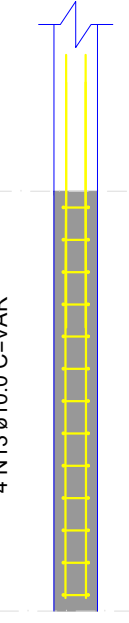
VISTA H

ESC 1:25



VISTA B

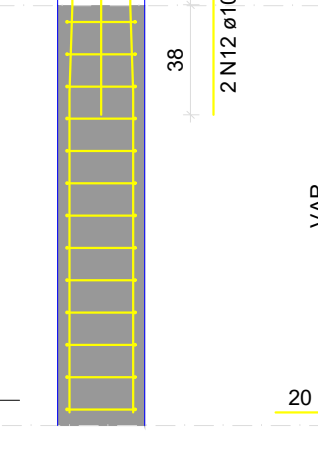
ESC 1:25



P2=P7=P9

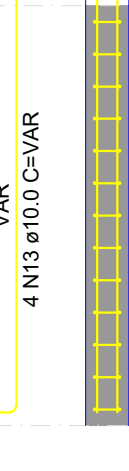
VISTA H

ESC 1:25



VISTA B

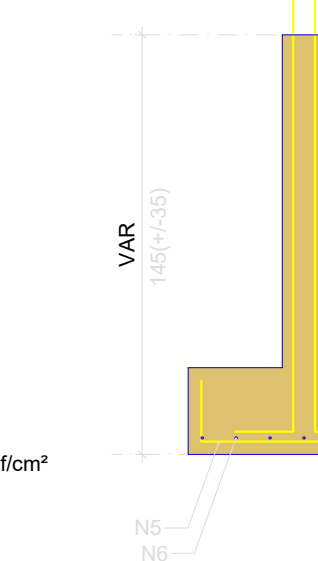
ESC 1:25



P6=P8

CORTE

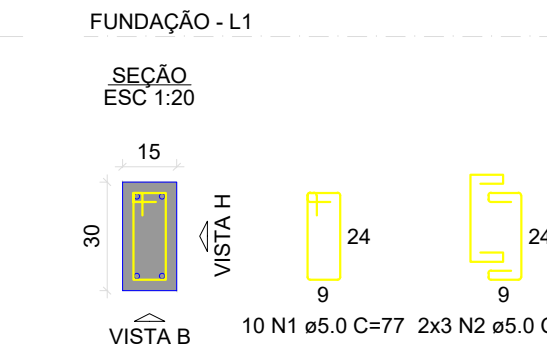
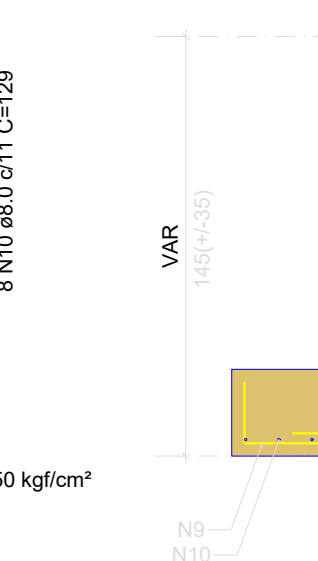
ESC 1:25



P12

CORTE

ESC 1:25



RELAÇÃO DO AÇO					
AÇO	N	DIAM (mm)	QUANT	C.UNIT (cm)	C.TOTAL (cm)
CA60	1	5.0	164	77	12628
CA50	2	5.0	82	54	4428
	3	8.0	30	84	2520
	4	8.0	65	99	6435
	5	8.0	16	109	1744
	6	8.0	14	124	1736
	7	8.0	12	89	1068
	8	8.0	20	104	2080
	9	8.0	15	119	1765
	10	8.0	8	129	1032
	11	8.0	30	114	3420
	12	10.0	4	75	300
	13	10.0	60	197	11820
	14	12.5	6	94	564
	15	12.5	4	205	820

RESUMO DO AÇO			
AÇO	DIAM (mm)	C.TOTAL (m)	PESO + 10% (kg)
CA50	8.0	218.2	94.7
	10.0	121.2	82.2
	12.5	13.3	14.7
CA60	5.0	170.6	28.9
PESO TOTAL (kg)			
CA50		191.6	
CA60		28.9	

Volume de concreto (C-25) = 3.50 m<sup>3</sup>  
Área de forma = 30.81 m<sup>2</sup>

PARA USO DA PREFEITURA

PARA USO DO PROJETISTA

ÁREA PROJEÇÃO	xxxx	ÁREA CONSTRUÍDA	xxxxxxxx	
ÁREA A CONSTRUIR	xxxx	TAXA DE OCUPAÇÃO	xxxxxxxx	
ÁREA TOTAL	xxxx	N° DE PISO	xxxxxxxx	
N° DO LOTE xxxxxxxx	N° DE QUADRA xxxxxxxx	BAIRRO xxxxxxxx	CIDADE Papagaio-MG	ÁREA DO TERRENO xxxxxxxx
ENDEREÇO DA OBRA RUA MIGUEL DIAS 1280				
USO xxxxxxxx			DATA abril/2026	
RESPONSÁVEL TÉCNICO Júlio Basta dos Reis Engenheiro Civil			CREA 246.344/D	
PROPRIETÁRIO PREFEITURA MUNICIPAL DE PAPAGAIOS			CNPJ/CPF 18.313.866/0001-18	
TÍTULO DO PROJETO Projeto Estrutural da Reforma e Ampliação - Parque de Exposição			FORMATO A 1	
CONTEÚDO Planta e detalhamento			FOLHA 04/04	